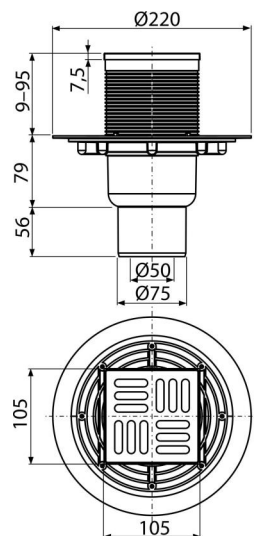


# APV201

Floor drain 105×105/50/75 mm straight outlet, stainless steel grid, wet odour trap



## Application

For wheelchair access  
For drainage of floor level showers  
For the interior, where will be frequent use associated with the regular water runoff into the floor drain (bathrooms)

## Features

- Compatibility with floor drains parts including wet, dry and combined odour trap SMART
- Solid brass grid 102×102×4 mm
- Material: stainless steel AISI 304, DIN 1.4301
- Material: polypropylene resistant to mechanical, chemical and thermal damage
- Mechanically cleanable trap up to the waste pipe
- Direct connection to waste Ø50/75 mm
- Wide insulation collar for connection to waterproofing construction
- Wet odour trap prevents the penetration of odours from the sewer
- Height adjustable throat 9–95 mm

## Scope of supply

- Design stainless steel grid
- Floor drain throat 105×105 mm
- Seal kit
- Drain body Ø50/75 mm, straight outlet
- Wet odour trap

## Order number, Logistic information

Code	EAN	Weight (piece   packing   palett)	Dimensions (piece   packing)	Quantity (packing   palett)
APV201	8594045930375	0,99   7,89   177,8 kg	230×190×230   780×245×475 mm	8   160 pcs

<b>Warranty</b> 2/6 years *	<b>Customs code</b> 39269097	<b>Norms</b> EN 1253
--------------------------------	---------------------------------	-------------------------

## Technical specifications

- Total installation height 144-230 mm
- Resistance of odour trap against the pressure 480 Pa
- Waste pipe diameter 75/50 mm
- Flow of the inlet grid 46 l/min
- Load class K3 300 kg
- Odour trap 51 mm