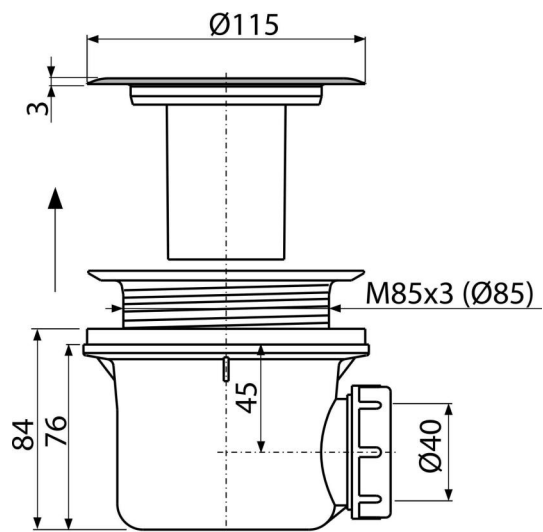


# A48

## Shower waste and trap with stainless steel grid



### Application

To drain the water from the shower trays  
For shower trays without overflow  
For shower trays with a drain outlet Ø90 mm

### Features

- Material: polypropylene, thermally and chemically resistant, longitudinally welded
- Waste can be connected using elbow A52
- Fully cleanable up to the waste pipe
- Building height 84 mm

### Scope of supply

- Assembly kit
- Chrome-plated stainless steel outlet grid
- Waste and trap body

### Order number, Logistic information

Code	EAN	Weight (piece   packing   palett)	Dimensions (piece   packing)	Quantity (packing   palett)
A48	8594045930603	0,29   7,07   218,0 kg	150×100×140   590×240×390 mm	24   672 pcs

Warranty 2/3 years *	Customs code 39229000	Norms EN 274
-------------------------	--------------------------	-----------------

### Technical specifications

- Flow rate 43 l/min
- Thermal resistance 95 °C
- Odour trap 50 mm