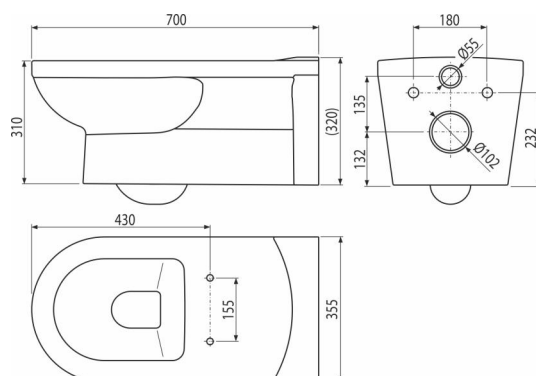


WC Alca MEDIC

Wall-hung WC for people with reduced mobility



Application

- For installing on pre-wall installation systems
- For wall mounting
- For disabled persons and people with reduced mobility

Features

- (For WC seat A674S it is necessary to order seat hinges P113 for top mounting)
- Color: white
- Deep flushing
- Compatible with WC seats: A66, A67, A678S, A67Slim, A674S
- Material: ceramic
- Attachment pitch 180 mm

Scope of supply

- Toilet bowl

Order number, Logistic information

Code	EAN	Weight (piece packing palett)	Dimensions (piece packing)	Quantity (packing palett)
WC Alca MEDIC	8595580504915	31,15 31,15 206,9 kg	700x355x400 700x355x400 mm	1 6 pcs

Warranty

2/2 years *