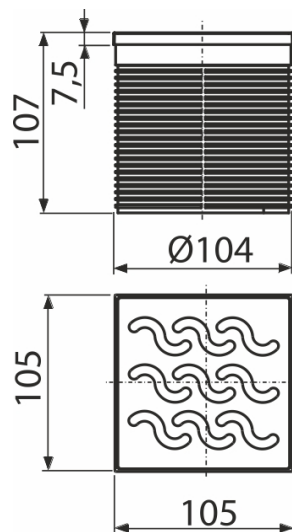
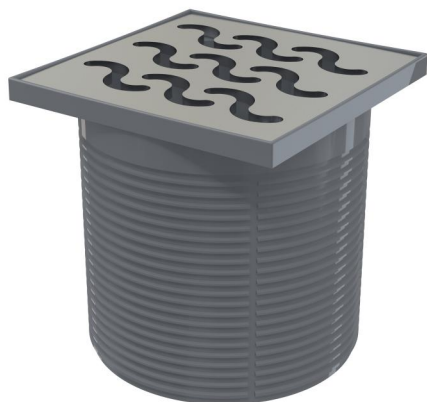


# APV0600

Drain throat, grid 105×105 mm stainless steel



## Application

For floor drains

For use indoors and outdoors

## Features

- Material: polypropylene resistant to mechanical, chemical and thermal damage
- Stainless steel grid 102×102×4 mm
- Horizontal folding for easier height adjustment of the throat and fixation in the floor

## Scope of supply

- Design stainless steel grid
- Floor drain throat 105×105 mm

## Order number, Logistic information

Code	EAN	Weight (piece   packing   palett)	Dimensions (piece   packing)	Quantity (packing   palett)
APV0600	8595580507435	0,41   0,41   - kg	mm	1   - pc

Customs code  
39269097

## Technical specifications

- Load class K3 300 kg