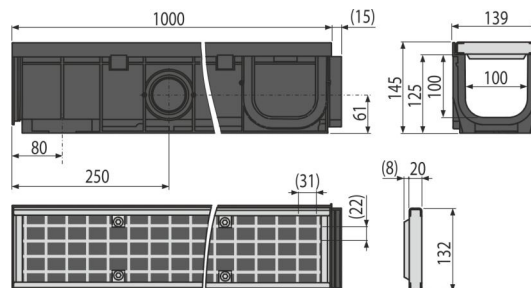
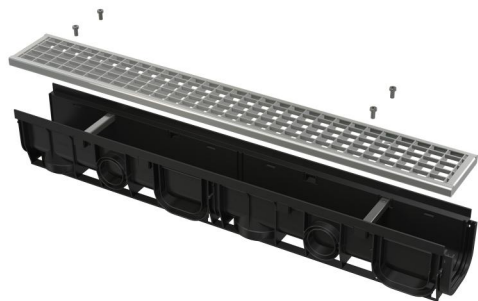


AVZ102-R103

Outdoor drain channel 100 mm with plastic frame and galvanized grid B125



Application

For drainage of areas with occasional passage of cars, sidewalks, pedestrian zones and similar areas for passenger cars

Features

- Numerous ribbing for a firm fixation within surrounding material
- The cover of the side opening can also be used as an inlet connector – Ø75 mm
- Material with UV stabilizer against aging, fading and degradation of plastic
- Material: polypropylene filled with talc resistant to mechanical, chemical and thermal damage
- Modular system – optional connection to form "I", "L", "T" or "X" shapes
- Galvanized welded grid – fixed to the drain using four stainless steel screws, mesh size 22×31 mm
- Prepared slots for using the locking bars to anchor the drain in concrete
- Ready for optional use of the odour trap with a grid for collection of the dirt
- Water connection from the side of the drain is possible at four locations – Ø50 mm
- Sophisticated and solid locking mechanism for simple connection of the individual drains
- Robust construction – self-supporting
- Easy access to the drain – easy to clean
- Bottom outlet waste connection Ø110 mm
- Lock system allows easy connecting without additional fixing elements

Scope of supply

- Stainless steel screws for fixing the grid to the drain, 4 pcs
- Galvanized grid – welded – load class B125
- Drain body with plastic frame, stainless steel spacers 2 pcs

Order number, Logistic information

Code	EAN	Weight (piece packing palett)	Dimensions (piece packing)	Quantity (packing palett)
AVZ102-R103	8595580511432	5,33 5,33 339,9 kg	139×1015×145 1800×1200×800 mm	1 60 pcs

Warranty

2/6 years *

Norms

EN1433

Technical specifications

- Total installation height 145 mm
- Waste pipe diameter 110 mm
- Flow profile of the drain 95,3 cm²
- Load class B125 12500 kg
- Inlet cross-section of galvanized grid 880,6 cm²