

# AVZ103-R201

Outdoor drain channel 100 mm with metal frame and a cast iron grid D400

## Application

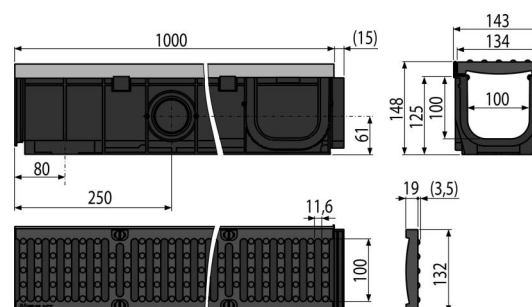
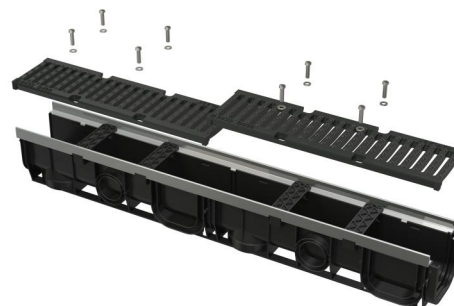
For drainage of parking lots and similar areas, lane roads and other roads

## Features

- Numerous ribbing for a firm fixation within surrounding material
- The drain can be simply cut in half to form two equal parts
- Metal vertical flange reinforces the drain edges
- The cover of the side opening can also be used as an inlet connector – Ø75 mm
- Material with UV stabilizer against aging, fading and degradation of plastic
- Material: polypropylene filled with talc resistant to mechanical, chemical and thermal damage
- Modular system – optional connection to form "I", "L", "T" or "X" shapes
- Prepared slots for using the locking bars to anchor the drain in concrete
- Ready for optional use of the odour trap with a grid for collection of the dirt
- Water connection from the side of the drain is possible at four locations – Ø50 mm
- Sophisticated and solid locking mechanism for simple connection of the individual drains
- Robust construction – self-supporting
- Cast iron grid – fixed to the drain with eight pcs of stainless steel screws, inlet slit width 11.6 mm
- Easy access to the drain – easy to clean
- Bottom outlet waste connection Ø110 mm
- Lock system allows easy connecting without additional fixing elements

## Scope of supply

- Installation spacer 4 pcs
- Cast iron grid – 2x0.5 m – load class D400
- Stainless steel screws for fixing the grid to the drain, 8 pcs
- Drain body with metal frame



## Order number, Logistic information

Code	EAN	Weight (piece   packing   palett)	Dimensions (piece   packing)	Quantity (packing   palett)
AVZ103-R201	8595580511456	13,44   13,44   423,1 kg	148x1015x145   920x1200x800 mm	1   30 pcs

**Warranty**  
2/6 years \*

**Norms**  
EN1433

## Technical specifications

- Total installation height 148 mm
- Waste pipe diameter 110 mm
- Flow profile of the drain 95,3 cm<sup>2</sup>
- Load class D400 40000 kg
- Inlet cross-section of the cast iron grid 448,3 cm<sup>2</sup>