

APV1324

Floor drain 105×105/50 mm side outlet, stainless steel grid, stainless steel flange and collar-2nd level insulation, combined odour trap SMART

Application

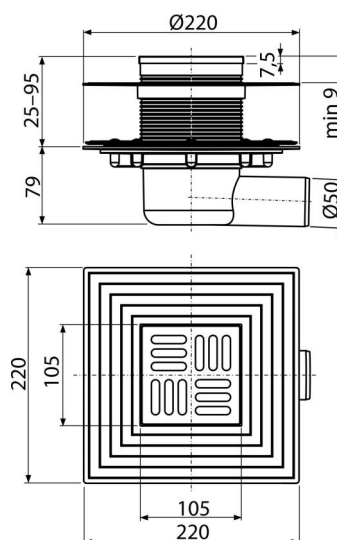
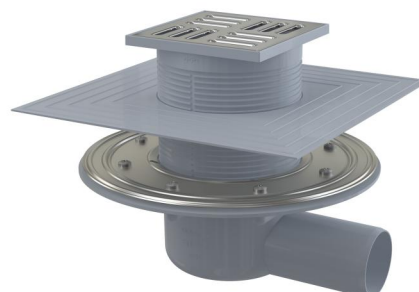
For wheelchair access
For drainage of floor level showers
For the interior, where it is not expected to regularly use the drain (laundry, boiler rooms, cellars)

Features

- Side connection to waste Ø50 mm
- Combined odour trap SMART
- Compatibility with floor drains parts including wet, dry and combined odour trap SMART
- Collar-2nd level of insulation for connecting to waterproofing layer beneath the pavement
- Material: stainless steel AISI 304, DIN 1.4301
- Material: polypropylene resistant to mechanical, chemical and thermal damage
- Mechanically cleanable trap up to the waste pipe
- Stainless steel grid 102×102×5 mm
- Stainless steel collar for firm attachment of waterproofing membrane or building waterproofing fabric
- Wide insulation collar for connection to waterproofing construction
- Water column and mechanical flap effectively prevent the penetration of odours from the sewer
- Height adjustable throat 25–95 mm

Scope of supply

- Floor drain throat 105×105 mm
- Combined odour trap SMART
- Collar-2nd level of insulation inner Ø105 mm
- Stainless steel grid
- Stainless steel flange + assembly set
- Seal kit
- Floor drain body Ø50 mm, side outlet



Order number, Logistic information

Code	EAN	Weight (piece packing palett)	Dimensions (piece packing)	Quantity (packing palett)
APV1324	8595580518479	1,17 9,32 169,1 kg	355×135×235 560×380×475 mm	8 128 pcs

Warranty	Customs code	Norms
2/6 years *	39269097	EN 1253

Technical specifications

- Total installation height 88-174 mm
- Waste pipe diameter 50 mm
- Flow of the inlet grid 37 l/min
- Load class K3 300 kg
- Odour trap 30 mm