

APV4444

Floor drain 150x150/50/75 mm straight outlet, stainless steel grid, stainless steel flange and collar-2nd level insulation, wet and dry odour trap

Application

For wheelchair access

For outdoor spaces where there may be a drop in temperature below freezing –

dry odour trap

For the interior, where there will be frequent use associated with the regular water

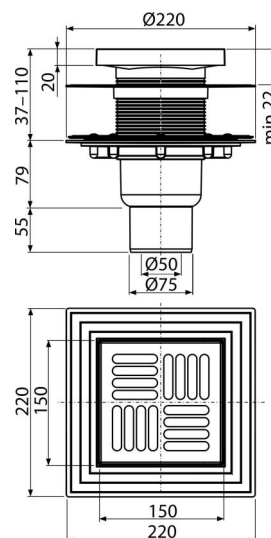
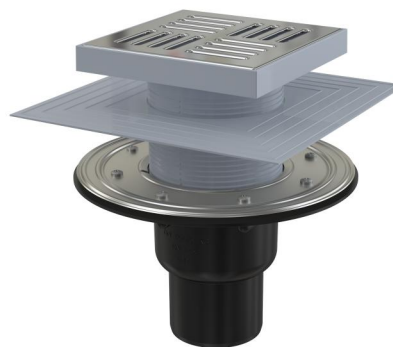
runoff into the floor drain (bathrooms) – wet odour trap

Features

- Compatibility with floor drains parts including wet, dry and combined odour trap SMART
- Collar-2nd level of insulation for connecting to waterproofing layer beneath the pavement
- Solid stainless steel grid 43x143x5 mm
- Material: stainless steel AISI 304, DIN 1.4301
- Material: polypropylene resistant to mechanical, chemical and thermal damage
- Mechanically cleanable trap up to the waste pipe
- Stainless steel collar for firm attachment of waterproofing membrane or building waterproofing fabric
- Direct connection to waste Ø50/75 mm
- Wide insulation collar for connection to waterproofing construction
- Optional use dry or wet odour traps
- Height adjustable throat 37–110 mm
- Odour traps prevent the penetration of odours from the sewer

Scope of supply

- Floor drain throat 150x150 mm
- Collar-2nd level of insulation inner Ø105 mm
- Stainless steel grid
- Stainless steel flange + assembly set
- Seal kit
- Dry odour trap
- Drain body Ø50/75 mm, straight outlet
- Wet odour trap



Order number, Logistic information

| Code | EAN | Weight (piece packing palett) | Dimensions (piece packing) | Quantity (packing palett) |
|---------|---------------|--------------------------------------|---------------------------------|--------------------------------|
| APV4444 | 8595580518547 | 1,37 10,94 238,8 kg | 230x190x230 780x245x475 mm | 8 160 pcs |

Warranty

2/6 years *

Norms

EN 1253

Technical specifications

- Total installation height 171-244 mm
- Resistance of odour trap against the pressure 480 Pa
- Waste pipe diameter 75/50 mm
- The flow of the inlet grid (dry odour trap) 62 l/min
- The flow of the inlet grid (wet odour trap) 46 l/min
- Wet odour trap 51 mm