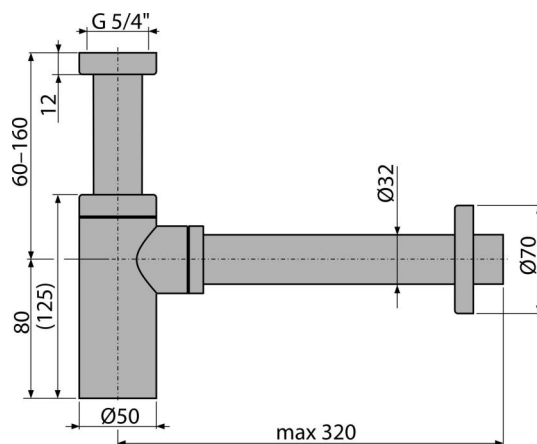
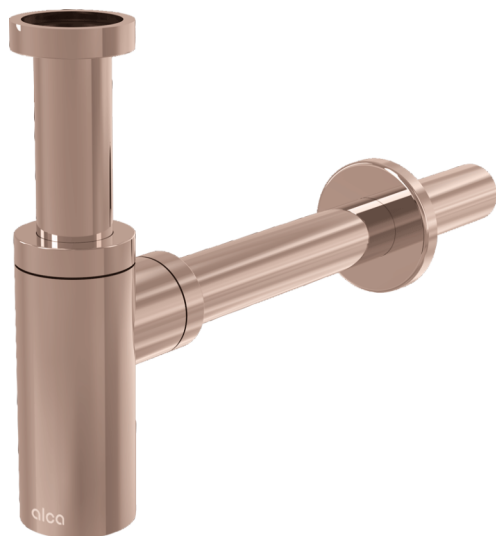


# A400-RG-P

Wash-basin trap DESIGN DN32, RED GOLD-polished



## Application

For wash-basin

## Features

- Material: brass with PVD surface finish
- Connection to waste pipe Ø32 mm
- High scratch resistance

## Scope of supply

- Nut to connect wash-basin waste 5/4"
- Metal rosette
- Waste and trap body

## Order number, Logistic information

| Code      | EAN           | Weight<br>(piece   packing   palett) | Dimensions<br>(piece   packing) | Quantity<br>(packing   palett) |
|-----------|---------------|--------------------------------------|---------------------------------|--------------------------------|
| A400-RG-P | 8595580571542 | 0,67   7,99   243,8 kg               | 330x70x150   590x240x390 mm     | 12   336 pcs                   |

|                 |                     |              |
|-----------------|---------------------|--------------|
| <b>Warranty</b> | <b>Customs code</b> | <b>Norms</b> |
| 2/3 years *     | 74182000            | EN 274       |

## Technical specifications

- Flow rate 30 l/min
- Odour trap 50 mm