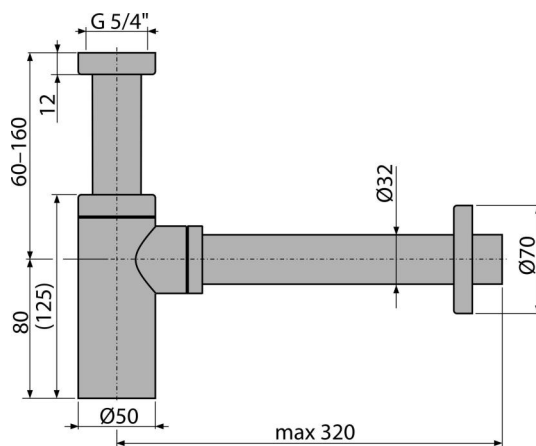
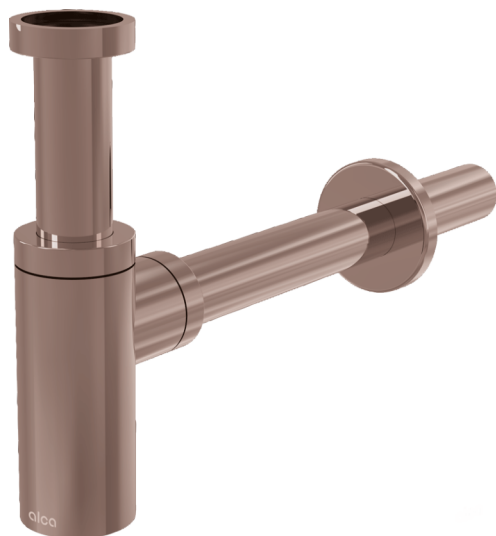


A400-RG-B

Wash-basin trap DESIGN DN32, RED GOLD-brushed matt



Application

For wash-basin

Features

- Material: brass with PVD surface finish
- Connection to waste pipe Ø32 mm
- High scratch resistance

Scope of supply

- Nut to connect wash-basin waste 5/4"
- Metal rosette
- Waste and trap body

Order number, Logistic information

| Code | EAN | Weight (piece packing palett) | Dimensions (piece packing) | Quantity (packing palett) |
|-----------|---------------|--------------------------------------|---------------------------------|--------------------------------|
| A400-RG-B | 8595580571559 | 0,67 7,99 243,8 kg | 330x70x150 590x240x390 mm | 12 336 pcs |

| Warranty | Customs code | Norms |
|-------------|--------------|--------|
| 2/3 years * | 74182000 | EN 274 |

Technical specifications

- Flow rate 30 l/min