

APZ30-650M Wall

Shower drain with an edge for perforated grids and fixed vertical flange to the wall

Application

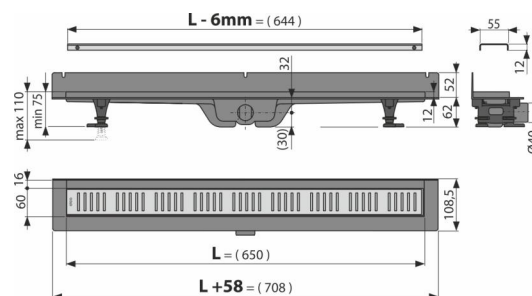
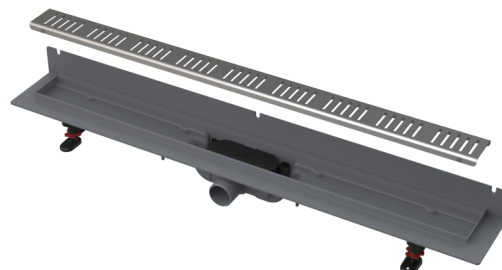
- For wheelchair access
- For drainage of floor-level showers
- For installation directly to the wall
- For indoor use

Features

- Secure connection to the construction waterproofing system
- The combined odour trap (own protected patent solution) provides protection against the odours from the sewage even after the water dries out from the trap
- Material: polypropylene filled with talc resistant to mechanical, chemical and thermal damage
- Mechanically cleanable trap up to the waste pipe
- They are made of highly durable plastic that resists frost and chemistry
- Grid is included in packaging
- Self-adhesive tape for quality waterproofing
- Installation height from 62 mm
- Adjustable plastic anchoring legs 0-35 mm allowing fast and convenient installation, including the precise setting of the required level
- High resistance against chemicals

Scope of supply

- Fixation set: screw $\varnothing 4$ – 4 pcs, 2x38, dowel $\varnothing 8$ – 4 pcs, screw $\varnothing 4,2 \times 38$ – 3 pcs, dowel $\varnothing 8$ – 3 pcs
- Combined odour trap SMART
- Stainless steel perforated grid Simple 10 in matt with a protective film
- Self-adhesive waterproofing tape
- Height adjustable feet 2 pcs
- Linear shower drain



Order number, Logistic information

Code	EAN	Weight (piece packing palett)	Dimensions (piece packing)	Quantity (packing palett)
APZ30-650M	8595580571832	650 mm 1,99 59,79 199,4 kg	723x132x169 735x822x373 mm	30 90 pcs

Warranty

2/6 years *

Norms

EN 1253

Technical specifications

- Total installation height 75-110 mm
- Minimum thickness of concrete 62 mm
- Resistance of odour trap against the pressure 640 Pa
- Waste outlet diameter 40 mm
- Flow of the inlet grid 28 l/min
- Load class K3 300 kg
- Odor trap combined with a water seal 29 mm