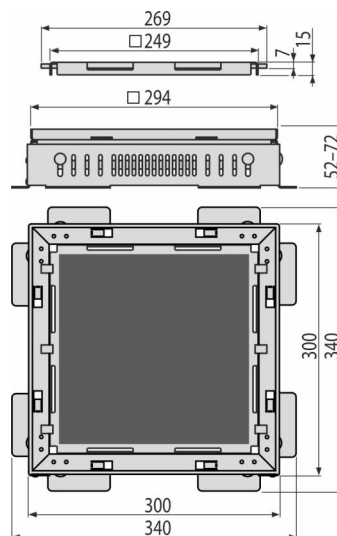
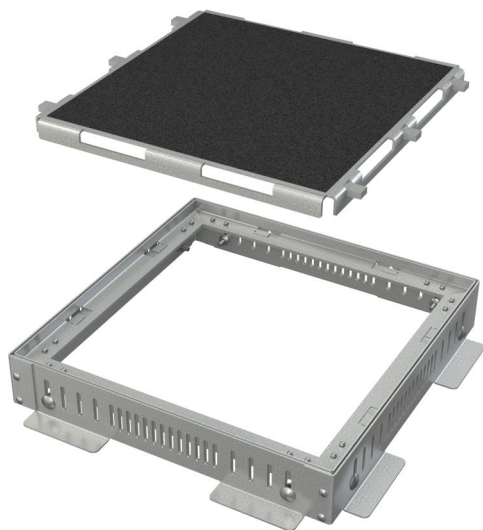


ADZ-NA101

Drain throat extension neck + Grid for embedding tiles 300x300, galvanized steel



Application

To protect buildings against the ingress of water
 For drainage of balconies and terraces
 For drainage around the building facades
 For permeable areas in the garden

Features

- Simple installation
- Material of extention: galvanized steel
- Width of the inlet slot 8 mm
- Easy access to the floor drain – simple cleaning
- Height-adjustable floor drain body extension 53-74 mm

Scope of supply

- Grid
- Adjustable extension body

Order number, Logistic information

Code	EAN	Weight (piece packing palett)	Dimensions (piece packing)	Quantity (packing palett)
ADZ-NA101	8595580581244	3,17 - 190,1 kg	340x1340x74 mm	1 60 pcs

Warranty 2/2 years * Customs code 73269098

Technical specifications

- Load class K3 300 kg